

Materials

- Only AISI T316L Stainless Steel is used for fitting manufacturing.

Surface Finishes

- Multiple combinations of finishes are available, from 10Ra maximum to 30Ra minimum.

Marking

- All fittings are pin-printed for permanent identification per ASME-BPE.
- The mill heat number is stamped on each fitting for each component.

Traceability

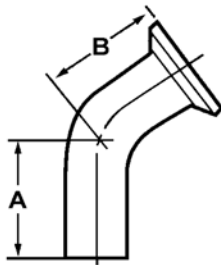
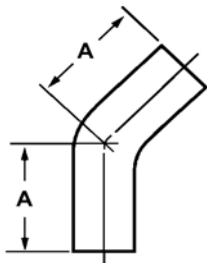
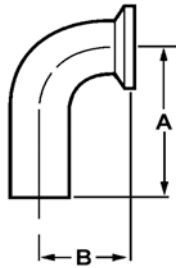
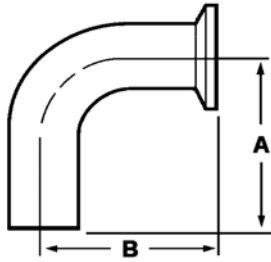
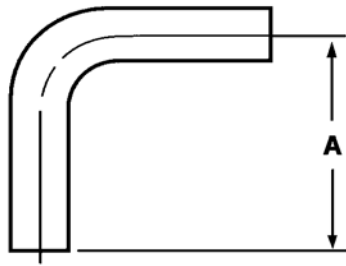
- A printed copy of MTR's is provided for all components used in fitting manufacturing and is available upon request.

Packaging

- Each fitting is cleaned in Deionized Water and dried with filtered air.
- All ends (weld & clamp) are capped to prevent damage.
- Each fitting is individually placed in a plastic bag and heat sealed.
- Every fitting has a label attached to the outside of the bag which lists the part number, part description and size, material type, heat number(s) and date of manufacture.

<u>Elbows</u>	<u>Page 2 & 3</u>
<u>Tees</u>	<u>Page 3, 4 & 5</u>
<u>Reducing Tees</u>	<u>Page 4 & 5</u>
<u>Crosses</u>	<u>Page 5</u>
<u>Weld Ferrules</u>	<u>Page 6</u>
<u>Concentric Reducers</u>	<u>Page 6</u>
<u>Lap Joint Ferrules</u>	<u>Page 7</u>
<u>Eccentric Reducers</u>	<u>Page 7</u>
<u>Weld Caps</u>	<u>Page 8</u>
<u>Use Points</u>	<u>Page 8 & 9</u>
<u>Clamp Elbows</u>	<u>Page 9 & 10</u>
<u>Clamp Tees</u>	<u>Page 10</u>
<u>Clamp Reducing Tees</u>	<u>Page 11</u>
<u>Clamp Crosses</u>	<u>Page 11</u>
<u>End Caps</u>	<u>Page 12</u>
<u>Reducers</u>	<u>Page 12</u>
<u>Pipe Adapters</u>	<u>Page 13</u>
<u>Hose Adapters</u>	<u>Page 14</u>
<u>Instrument Tees</u>	<u>Page 14</u>

Elbows



TA2S		90° Elbow
Tube O.D.	A	Part Number
1/2	3	51037-500
3/4	3	51037-501
1	3	51037-502
1.5	3.75	51037-503
2	4.75	51037-504
2.5	5.5	51037-505
3	6.25	51037-506
4	8	51037-507

TA2CM*			90° Elbow
Tube O.D.	A	B	Part Number
1/2	3	3.5	51137-500
3/4	3	3.5	51137-501
1	3	3.5	51137-502
1.5	3.75	4.25	51137-503
2	4.75	5.25	51137-504
2.5	5.5	6	51137-505
3	6.25	6.75	51137-506
4	8	8.625	51137-507

TA2CMS			90° Elbow
Tube O.D.	A	B	Part Number
1/2	3	1.625	51137-667
3/4	3	1.625	51137-668
1	3	2	51137-669
1.5	3.75	2.75	51137-670
2	4.75	3.5	51137-671
2.5	5.5	4.25	51137-672
3	6.25	5	51137-673
4	8	6.625	51137-674

TA2KS		45° Elbow
Tube O.D.	A	Part Number
1/2	2.25	51037-508
3/4	2.25	51037-509
1	2.25	51037-510
1.5	2.5	51037-511
2	3	51037-512
2.5	3.375	51037-513
3	3.625	51037-514
4	4.5	51037-515

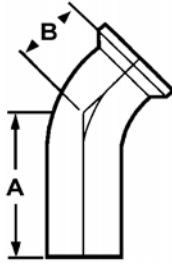
TA2KM*			45° Elbow
Tube O.D.	A	B	Part Number
1/2	2.25	2.75	51137-508
3/4	2.25	2.75	51137-509
1	2.25	2.75	51137-510
1.5	2.5	3	51137-511
2	3	3.5	51137-512
2.5	3.375	3.875	51137-513
3	3.625	4.125	51137-514
4	4.5	5.125	51137-515

Note: 1/2" fittings take 3/4" clamps.

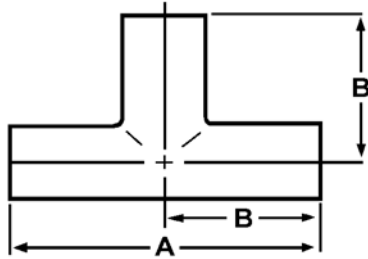
*Indicates Not to BPE Dimensions

sani-tech
west

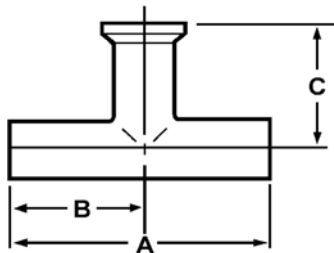
Elbows & Tees



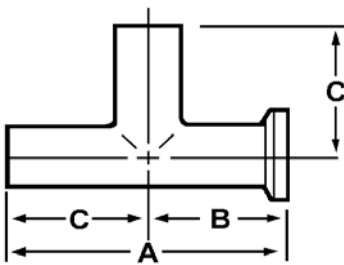
TA2KMS		45° Elbow	
Size Tube O.D.	A	B	Part Number
1/2	2.25	1	51137-883
3/4	2.25	1	51137-884
1	2.25	1.125	51137-885
1.5	2.5	1.4375	51137-886
2	3	1.75	51137-887
2.5	3.375	2.0625	51137-888
3	3.625	2.375	51137-889
4	4.5	3.125	51137-890



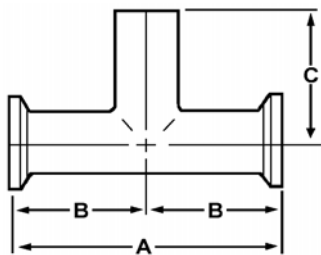
TA7WWW		TEE	
Size Tube O.D.	A	B	Part Number
1/2	3 3/4	1 7/8	51037-516
3/4	4	2	51037-517
1	4 1/4	2 1/8	51037-518
1 1/2	4 3/4	2 3/8	51037-519
2	5 3/4	2 7/8	51037-520
2 1/2	6 1/4	3 1/8	51037-521
3	6 3/4	3 3/8	51037-522
4	8 1/4	4 1/8	51037-523



TA7WWM*		TEE		
Size Tube O.D.	A	B	C	Part Number
1/2	3 3/4	1 7/8	2 3/8	51137-516
3/4	4	2	2 1/2	51137-517
1	4 1/4	2 1/8	2 5/8	51137-518
1 1/2	4 3/4	2 3/8	2 7/8	51137-519
2	5 3/4	2 7/8	3 3/8	51137-520
2 1/2	6 1/4	3 1/8	3 5/8	51137-521
3	6 3/4	3 3/8	3 7/8	51137-522
4	8 1/4	4 1/8	4 3/4	51137-523



TA7MMW*		TEE		
Size Tube O.D.	A	B	C	Part Number
1/2	4 1/4	2 3/8	1 7/8	51137-524
3/4	4 1/2	2 1/2	2	51137-525
1	4 3/4	2 5/8	2 1/8	51137-526
1 1/2	5 1/4	2 7/8	2 3/8	51137-527
2	6 1/4	3 3/8	2 7/8	51137-528
2 1/2	6 3/4	3 5/8	3 1/8	51137-529
3	7 1/4	3 7/8	3 3/8	51137-530
4	8 7/8	4 3/4	4 1/8	51137-531



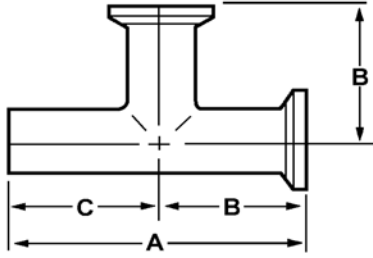
TA7MMW*		TEE		
Size Tube O.D.	A	B	C	Part Number
1/2	4 3/4	2 3/8	1 7/8	51137-540
3/4	5	2 1/2	2	51137-541
1	5 1/4	2 5/8	2 1/8	51137-542
1 1/2	5 3/4	2 7/8	2 3/8	51137-543
2	6 3/4	3 3/8	2 7/8	51137-544
2 1/2	7 1/4	3 5/8	3 1/8	51137-545
3	7 3/4	3 7/8	3 3/8	51137-546
4	9 1/2	4 3/4	4 1/8	51137-547

Note: 1/2" fittings take 3/4" clamps.

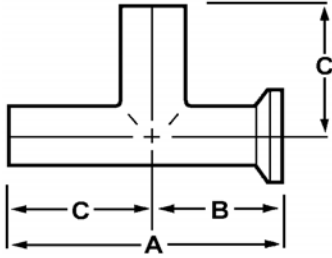
* Is not to BPE Dimensions

sani-tech
west

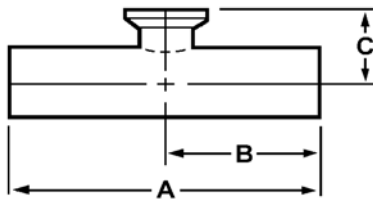
Tees & Reducing Tees



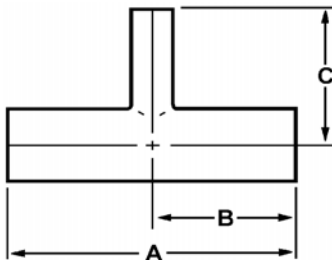
TA7WMM*				TEE
Tube O.D.	A	B	C	Part Number
1/2	4 1/4	2 3/8	1 7/8	51137-532
3/4	4 1/2	2 1/2	2	51137-533
1	4 3/4	2 5/8	2 1/8	51137-534
1 1/2	5 1/4	2 7/8	2 3/8	51137-535
2	6 1/4	3 3/8	2 7/8	51137-536
2 1/2	6 3/4	3 5/8	3 1/8	51137-537
3	7 1/4	3 7/8	3 3/8	51137-538
4	8 7/8	4 3/4	4 1/8	51137-539



TA7WMSW				TEE
Tube O.D.	A	B	C	Part Number
1/2	2 7/8	7/8	1 7/8	51137-892
3/4	3	1	2	51137-893
1	3 1/4	1 1/8	2 1/8	51137-894
1 1/2	3 3/4	1 3/8	2 3/8	51137-895
2	4 1/2	1 5/8	2 7/8	51137-896
2 1/2	5	1 7/8	3 1/8	51137-897
3	5 1/2	2 1/8	3 3/8	51137-898
4	6 7/8	2 3/4	4 1/8	51137-899



TA7WMS				Short Outlet Tee
Tube O.D.	A	B	C	Part Number
1/2	3 3/4	1 7/8	1	51037-524
3/4	4	2	1 1/8	51037-525
1	4 1/4	2 1/8	1 1/8	51037-526
1 1/2	4 3/4	2 3/8	1 3/8	51037-527
2	5 3/4	2 7/8	1 5/8	51037-528
2 1/2	6 1/4	3 1/8	1 7/8	51037-529
3	6 3/4	3 3/8	2 1/8	51037-530
4	8 1/4	4 1/8	2 3/4	51037-531



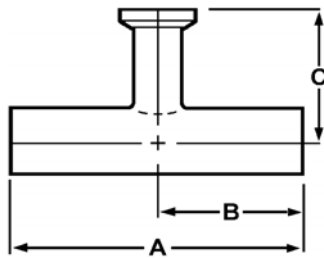
TA7RWW				Reducing Tee
Tube O.D.	A	B	C	Part Number
3/4 x 1/2	4	2	2	51037-532
1 x 1/2	4 1/4	2 1/8	2 1/8	51037-533
1 x 3/4	4 1/4	2 1/8	2 1/8	51037-534
1 1/2 x 1/2	4 3/4	2 3/8	2 3/8	51037-535
1 1/2 x 3/4	4 3/4	2 3/8	2 3/8	51037-536
1 1/2 x 1	4 3/4	2 3/8	2 3/8	51037-537
2 x 1/2	5 3/4	2 7/8	2 5/8	51037-538
2 x 3/4	5 3/4	2 7/8	2 5/8	51037-539
2 x 1	5 3/4	2 7/8	2 5/8	51037-540
2 x 1 1/2	5 3/4	2 7/8	2 5/8	51037-541
2 1/2 x 2	6 1/4	3 1/8	2 7/8	51037-542
3 x 2	6 3/4	3 3/8	3 1/8	51037-543
3 x 2 1/2	6 3/4	3 3/8	3 1/8	51037-544
4 x 2	8 1/4	4 1/8	3 7/8	51037-545
4 x 2 1/2	8 1/4	4 1/8	3 7/8	51037-546
4 x 3	8 1/4	4 1/8	3 7/8	51037-547

Note: 1/2" fittings take 3/4" clamps.

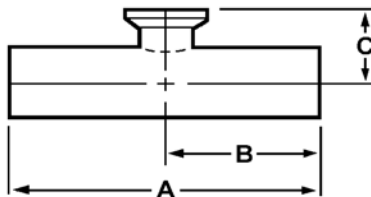
*Indicates Not to BPE Dimensions



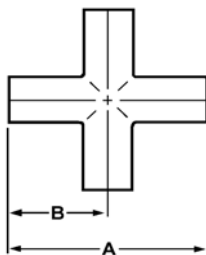
Tees, Reducing Tees & Crosses



TA7RWWM		Reducing Tee		
Size Tube O.D.	A	B	C	Part Number
3/4 x 1/2	4	2	2 1/2	51137-548
1 x 1/2	4 1/4	2 1/8	2 5/8	51137-549
1 x 3/4	4 1/4	2 1/8	2 5/8	51137-550
1 1/2 x 1/2	4 3/4	2 3/8	2 7/8	51137-551
1 1/2 x 3/4	4 3/4	2 3/8	2 7/8	51137-552
1 1/2 x 1	4 3/4	2 3/8	2 7/8	51137-553
2 x 1/2	5 3/4	2 7/8	3 1/8	51137-554
2 x 3/4	5 3/4	2 7/8	3 1/8	51137-555
2 x 1	5 3/4	2 7/8	3 1/8	51137-556
2 x 1 1/2	5 3/4	2 7/8	3 1/8	51137-557
2 1/2 x 2	6 1/4	3 1/8	3 3/8	51137-558
3 x 2	6 3/4	3 3/8	3 5/8	51137-559
3 x 2 1/2	6 3/4	3 3/8	3 5/8	51137-560
4 x 2	8 1/4	4 1/8	4 3/8	51137-561
4 x 2 1/2	8 1/4	4 1/8	4 3/8	51137-562
4 x 3	8 1/4	4 1/8	4 3/8	51137-563



TA7RWWS		Short Outlet Reducing Tee		
Size Tube O.D.	A	B	C	Part Number
3/4 x 1/2	4	2	1	51037-554
1 x 1/2	4 1/4	2 1/8	1 1/8	51037-555
1 x 3/4	4 1/4	2 1/8	1 1/8	51037-556
1 1/2 x 1/2	4 3/4	2 3/8	1 3/8	51037-557
1 1/2 x 3/4	4 3/4	2 3/8	1 3/8	51037-558
1 1/2 x 1	4 3/4	2 3/8	1 3/8	51037-559
2 x 1/2	5 3/4	2 7/8	1 5/8	51037-560
2 x 3/4	5 3/4	2 7/8	1 5/8	51037-561
2 x 1	5 3/4	2 7/8	1 5/8	51037-562
2 x 1 1/2	5 3/4	2 7/8	1 5/8	51037-563
2 1/2 x 2	6 1/4	3 1/8	1 7/8	51037-564
3 x 2	6 3/4	3 3/8	2 1/8	51037-565
3 x 2 1/2	6 3/4	3 3/8	2 1/8	51037-566
4 x 2	8 1/4	4 1/8	2 5/8	51037-567
4 x 2 1/2	8 1/4	4 1/8	2 5/8	51037-568
4 x 3	8 1/4	4 1/8	2 5/8	51037-569

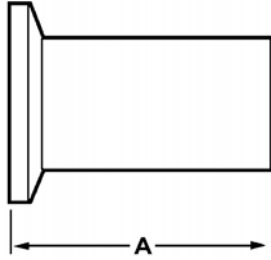


TA9WWWW		Cross	
Size Tube O.D.	A	B	Part Number
1/2	3 3/4	1 7/8	51037-576
3/4	4	2	51037-577
1	4 1/4	2 1/8	51037-578
1 1/2	4 3/4	2 3/8	51037-579
2	5 3/4	2 7/8	51037-580
2 1/2	6 1/4	3 1/8	51037-581
3	6 3/4	3 3/8	51037-582
4	8 1/4	4 1/8	51037-583

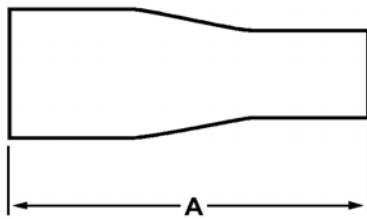
Note: 1/2" fittings take 3/4" clamps.

*Indicates Not to BPE Dimensions

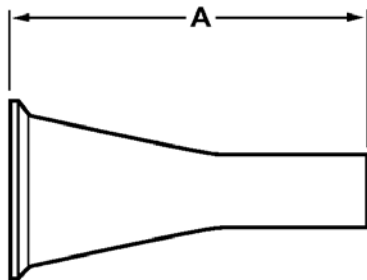
Weld Ferrules & Concentric Reducers



TA14AM7		Ferrule
Size Tube O.D.	A	Part Number
1/2	1 3/4	51029-500
3/4	1 3/4	51029-501
1	1 3/4	51029-502
1 1/2	1 3/4	51029-503
2	2 1/4	51029-504
2 1/2	2 1/4	51029-505
3	2 1/4	51029-506
4	2 1/4	51029-507



TA31E		Concentric Reducer
Size Tube O.D.	A	Part Number
3/4 x 1/2	4	51137-570
1 x 1/2	4 1/2	51137-571
1 x 3/4	4	51137-572
1 1/2 x 1/2	5 1/2	51137-573
1 1/2 x 3/4	5	51137-574
1 1/2 x 1	5	51137-575
2 x 1	7 1/4	51137-578
2 x 1 1/2	5 1/4	51137-579
2 1/2 x 1 1/2	7 1/4	51137-580
2 1/2 x 2	5 1/2	51137-581
3 x 1 1/2	9 1/4	51137-582
3 x 2	7 1/2	51137-583
3 x 2 1/2	5 1/2	51137-584
4 x 2	11 3/4	51137-585
4 x 2 1/2	9 3/4	51137-586
4 x 3	7 3/4	51137-587

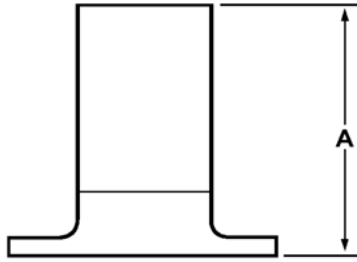


TA31ME		Concentric Reducer
Size Tube O.D.	A	Part Number
3/4 x 1/2	3	51137-967
1 x 1/2	3 1/2	51137-968
1 x 3/4	3	51137-969
1 1/2 x 1/2	4 1/2	51137-970
1 1/2 x 3/4	4	51137-971
1 1/2 x 1	4	51137-972
2 x 1	6	51137-975
2 x 1 1/2	4	51137-976
2 1/2 x 1 1/2	6	51137-980
2 1/2 x 2	4 1/4	51137-981
3 x 1 1/2	8	51137-984
3 x 2	6 1/4	51137-985
3 x 2 1/2	4 1/4	51137-986
4 x 2	10 3/8	51137-990
4 x 2 1/2	8 3/8	51137-991
4 x 3	6 3/8	51137-992

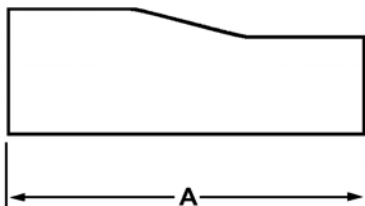
Note: 1/2" fittings take 3/4" clamps.

*Indicates Not to BPE Dimensions

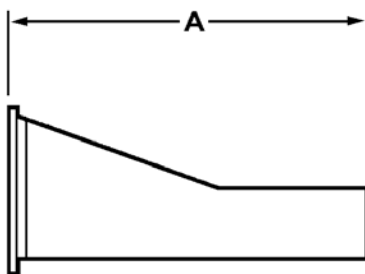
Lap Joint Ferrules & Eccentric Reducers



TA14WA* Lap Joint Ferrule		
Size Tube O.D.	A	Part Number
1/2	2	51129-213
3/4	2	51129-214
1	2	51129-215
1 1/2	2	51129-216
2	2	51129-217
2 1/2	2 1/2	51129-218
3	2 1/2	51129-219
4	3	51129-220



TA32E Eccentric Reducer		
Size Tube O.D.	A	Part Number
3/4 x 1/2	4	51137-588
1 x 1/2	4 1/2	51137-589
1 x 3/4	4	51137-590
1 1/2 x 1/2	7	51137-591*
1 1/2 x 3/4	6	51137-592*
1 1/2 x 1	5	51137-593
2 x 1	7 1/4	51137-596
2 x 1 1/2	5 1/4	51137-597
2 1/2 x 1 1/2	7 1/4	51137-598
2 1/2 x 2	5 1/2	51137-599
3 x 1 1/2	9 1/4	51137-600
3 x 2	7 1/2	51137-601
3 x 2 1/2	5 1/2	51137-602
4 x 2	11 3/4	51137-603
4 x 2 1/2	9 3/4	51137-604
4 x 3	7 3/4	51137-605

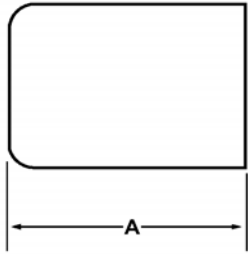


TA32ME Eccentric Reducer C&W		
Size Tube O.D.	A	Part Number
3/4 x 1/2	3	51137-772
1 x 1/2	3 1/2	51137-773*
1 x 3/4	3	51137-774
1 1/2 x 1/2	6	51137-775*
1 1/2 x 3/4	5	51137-776*
1 1/2 x 1	4	51137-777
2 x 1	6	51137-780
2 x 1 1/2	4	51137-781
2 1/2 x 1 1/2	6	51137-785
2 1/2 x 2	4 1/4	51137-786
3 x 1 1/2	8	51137-789
3 x 2	6 1/4	51137-790
3 x 2 1/2	4 1/4	51137-791
4 x 2	10 3/8	51137-795
4 x 2 1/2	8 3/8	51137-796
4 x 3	6 3/8	51137-797

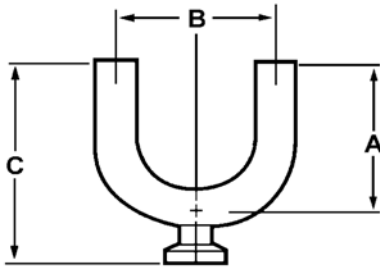
Note: 1/2" fittings take 3/4" clamps.

*Indicates Not to BPE Dimensions

Weld Caps & Use-Points



TA16W*		Weld Cap
Size Tube O.D.	A	Part Number
1/2	1 1/2	51003-091
3/4	1 1/2	51003-092
1	1 1/2	51003-093
1 1/2	2 1/16	51003-094
2	2 1/4	51003-095
2 1/2	2 1/2	51003-096
3	2 3/4	51003-097
4	3	51003-098

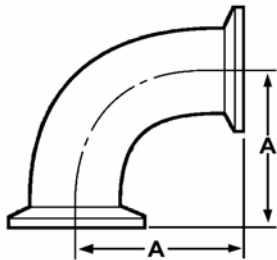
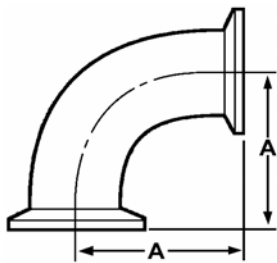
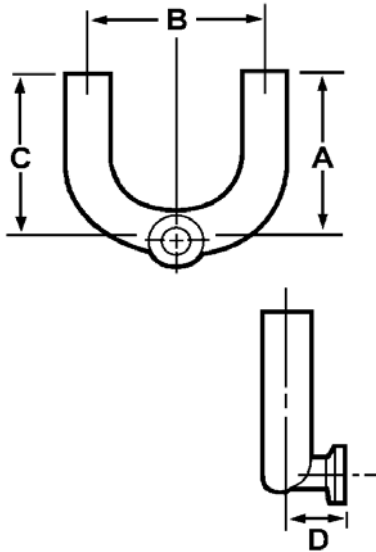


TA2UBWWM		Bottom Outlet Use Point		
Size Tube O.D.	A	B	C	Part Number
3/4 x 1/2	3 3/4	4 1/2	4 21/32	51137-615
1 x 1/2	3 3/4	4 1/2	4 25/32	51137-616
1 x 3/4	3 3/4	4 1/2	4 25/32	51137-638
1 1/2 x 1/2	3 3/4	4 1/2	5 1/32	51137-617
1 1/2 x 3/4	3 3/4	4 1/2	5 1/32	51137-639
1 1/2 x 1	3 3/4	4 1/2	5 1/16	51137-840
2 x 1/2	5	6	6 17/32	51137-618
2 x 3/4	5	6	6 17/32	51137-640
2 x 1	5	6	6 9/16	51137-841
2 x 1 1/2	5	6	6 9/16	51137-846
2 1/2 x 1/2	5 3/4	7 1/2	7 17/32	51137-619
2 1/2 x 3/4	5 3/4	7 1/2	7 17/32	51137-641
2 1/2 x 1	5 3/4	7 1/2	7 9/16	51137-842
2 1/2 x 1 1/2	5 3/4	7 1/2	7 9/16	51137-847
2 1/2 x 2	5 3/4	7 1/2	7 5/8	51137-851
3 x 1/2	6 1/2	9	8 17/32	51137-620
3 x 3/4	6 1/2	9	8 17/32	51137-642
3 x 1	6 1/2	9	8 9/16	51137-843
3 x 1 1/2	6 1/2	9	8 9/16	51137-848
3 x 2	6 1/2	9	8 5/8	51137-852
3 x 2 1/2	6 1/2	9	8 5/8	51137-855
4 x 1/2	8 1/2	12	11 1/8	51137-621
4 x 3/4	8 1/2	12	11 1/8	51137-643
4 x 1	8 1/2	12	11 1/8	51137-844
4 x 1 1/2	8 1/2	12	11 1/8	51137-849
4 x 2	8 1/2	12	11 1/8	51137-853
4 x 2 1/2	8 1/2	12	11 1/8	51137-856
4 x 3	8 1/2	12	11 1/8	51137-858

Note: 1/2" fittings take 3/4" clamps.

*Indicates Not to BPE Dimensions

Use-Points & Clamp Elbows



TA2USWWM				Side Outlet Use Point	
Size Tube O.D.	A	B	C	D	Part Number
3/4 x 1/2	3 3/4	4 1/2	3 7/8	29/32	51137-623
1 x 1/2	3 3/4	4 1/2	4	1 1/32	51137-624
1 x 3/4	3	4 1/2	3 1/8	1 1/4	51137-638
1 1/2 x 1/2	3 3/4	4 1/2	4 1/4	1 9/32	51137-625
1 1/2 x 3/4	4 1/2	6	4 7/8	1 1/4	51137-639
1 1/2 x 1	3 3/4	4 1/2	4	1 5/16	51137-861
2 x 1/2	5	6	5 3/4	1 3/4	51137-626
2 x 3/4	5	6	5 5/8	1 3/4	51137-640
2 x 1	5	6	5 1/2	1 3/4	51137-862
2 x 1 1/2	5	6	5 1/4	1 3/4	51137-867
2 1/2 x 1/2	5 3/4	7 1/2	6 3/4	2	51137-627
2 1/2 x 3/4	5 3/4	7 1/2	6 5/8	2	51137-641
2 1/2 x 1	5 3/4	7 1/2	6 1/2	2	51137-863
2 1/2 x 1 1/2	5 3/4	7 1/2	6 1/4	2	51137-868
2 1/2 x 2	5 3/4	7 1/2	6	2	51137-872
3 x 1/2	6 1/2	9	7 3/4	2 1/4	51137-628
3 x 3/4	6 1/2	9	7 5/8	2 1/4	51137-642
3 x 1	6 1/2	9	7 1/2	2 1/4	51137-864
3 x 1 1/2	6 1/2	9	7 1/4	2 1/4	51137-869
3 x 2	6 1/2	9	7	2 1/4	51137-873
3 x 2 1/2	6 1/2	9	6 3/4	2 1/4	51137-876
4 x 1/2	8 1/2	12	10 1/4	2 3/4	51137-629
4 x 3/4	8 1/2	12	10 1/8	2 3/4	51137-643
4 x 1	8 1/2	12	10	2 3/4	51137-865
4 x 1 1/2	8 1/2	12	9 3/4	2 3/4	51137-870
4 x 2	8 1/2	12	9 1/2	2 3/4	51137-874
4 x 2 1/2	8 1/2	12	9 1/4	2 3/4	51137-877
4 x 3	8 1/2	12	9	2 3/4	51137-879

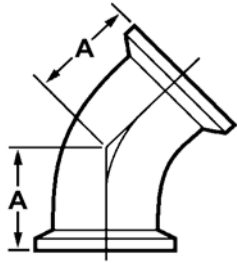
A2CMPS		90° Elbow
Size Tube O.D.	A	Part Number
1/2	1.625	51137-908
3/4	1.625	51137-909

A2CMP		90° Elbow
Size Tube O.D.	A	Part Number
1/2*	3.5	51137-900*
3/4*	3.5	51137-901*
1	2	51137-167
1.5	2.75	51137-168
2	3.5	51137-169
2.5	4.25	51137-170
3	5	51137-171
4	6.625	51137-172

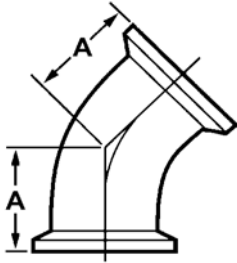
Note: 1/2" fittings take 3/4" clamps.
*Indicates Not to BPE Dimensions



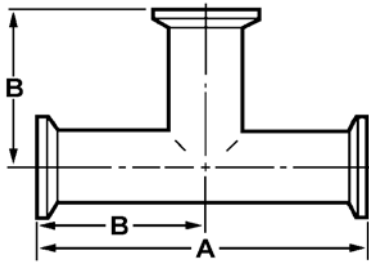
Clamp Elbows & Tees



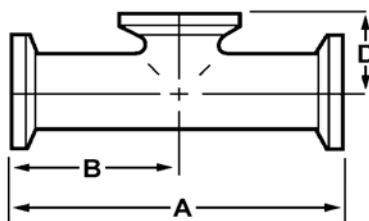
A2KMPS		45° Elbow	
Size Tube O.D.	A	Part Number	
1/2	1	51137-910	
3/4	1	51137-911	



A2KMP		45° Elbow	
Size Tube O.D.	A	Part Number	
1/2*	2.75	51137-904*	
3/4*	2.75	51137-905*	
1	1.125	51137-173	
1.5	1.4375	51137-174	
2	1.75	51137-175	
2.5	2.0625	51137-176	
3	2.375	51137-177	
4	3.125	51137-178	



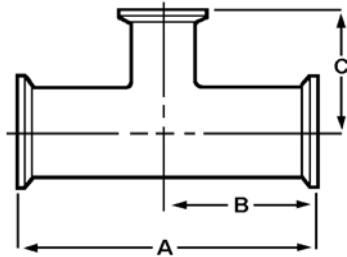
A7MP		Tee	
Size Tube O.D.	A	B	Part Number
1/2	4 1/2	2 1/4	51137-912
3/4	4 3/4	2 3/8	51137-913
1	5 1/4	2 5/8	51137-179
1 1/2	5 3/4	2 7/8	51137-180
2	6 3/4	3 3/8	51137-181
2 1/2	7 1/4	3 5/8	51137-182
3	7 3/4	3 7/8	51137-183
4	9 1/2	4 3/4	51137-184



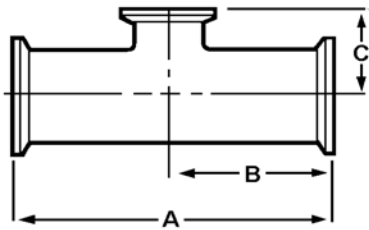
A7MPS*		Short Outlet Tee		
Size Tube O.D.	A	B	C	Part Number
1/2	4 3/4	2 3/8	1	51137-914
3/4	5	2 1/2	1 1/8	51137-915
1	5 1/4	2 5/8	1 1/8	51037-911
1 1/2	5 3/4	2 7/8	1 3/8	51037-912
2	6 3/4	3 3/8	1 5/8	51037-913
2 1/2	7 1/4	3 5/8	1 7/8	51037-914
3	7 3/4	3 7/8	2 1/8	51037-915
4	9 1/2	4 3/4	2 3/4	51037-916

Note: 1/2" fittings take 3/4" clamps.
*Indicates Not to BPE Dimensions

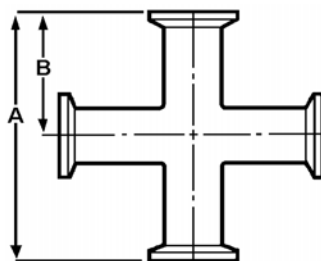
Clamp Reducing Tees & Crosses



A7RMP		Reducing Tee		
Size Tube O.D.	A	B	C	Part Number
3/4 x 1/2	5	2 1/2	2 1/2	51137-916
1 x 1/2	5 1/4	2 5/8	2 5/8	51137-917
1 x 3/4	5 1/4	2 5/8	2 5/8	51137-918
1 1/2 x 1/2	5 3/4	2 7/8	2 7/8	51137-920
1 1/2 x 3/4	5 3/4	2 7/8	2 7/8	51137-921
1 1/2 x 1	5 3/4	2 7/8	2 7/8	51137-924
2 x 1/2	6 3/4	3 3/8	3 1/8	51137-922
2 x 3/4	6 3/4	3 3/8	3 1/8	51137-923
2 x 1	6 3/4	3 3/8	3 1/8	51137-391
2 x 1 1/2	6 3/4	3 3/8	3 1/8	51137-392
2 1/2 x 2	7 1/4	3 5/8	3 3/8	51137-393
3 x 1	7 3/4	3 7/8	3 5/8	51137-928
3 x 1 1/2	7 3/4	3 7/8	3 5/8	51137-927
3 x 2	7 3/4	3 7/8	3 7/8	51137-394
3 x 2 1/2	7 3/4	3 7/8	3 7/8	51137-395
4 x 1 1/2	9 1/2	4 3/4	4 1/8	51137-926
4 x 2	9 1/2	4 3/4	4 3/8	51137-488
4 x 2 1/2	9 1/2	4 3/4	4 3/8	51137-929
4 x 3	9 1/2	4 3/4	4 3/8	51137-490



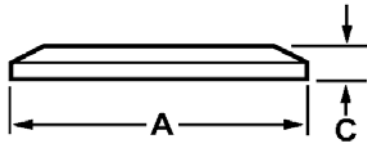
A7RMP Short Outlet Reducing Tee		Short Outlet Reducing Tee		
Size Tube O.D.	A	B	C	Part Number
3/4 x 1/2	5	2 1/2	1	51037-904
1 x 1/2	5 1/4	2 5/8	1 1/8	51037-905
1 x 3/4	5 1/4	2 5/8	1 1/8	51037-906
1 1/2 x 1/2	5 3/4	2 7/8	1 3/8	51037-907
1 1/2 x 3/4	5 3/4	2 7/8	1 3/8	51037-908
1 1/2 x 1	5 3/4	2 7/8	1 3/8	51137-459
2 x 1/2	6 3/4	3 3/8	1 5/8	51037-909
2 x 3/4	6 3/4	3 3/8	1 5/8	51037-910
2 x 1	6 3/4	3 3/8	1 5/8	51137-460
2 x 1 1/2	6 3/4	3 3/8	1 5/8	51137-461
2 1/2 x 2	7 1/4	3 5/8	1 7/8	51137-464
3 x 1	7 3/4	3 7/8	2 1/8	51137-465
3 x 1 1/2	7 3/4	3 7/8	2 1/8	51137-466
3 x 2	7 3/4	3 7/8	2 1/8	51137-467
3 x 2 1/2	7 3/4	3 7/8	2 1/8	51137-468
4 x 1 1/2	9 1/2	4 3/4	2 5/8	51137-470
4 x 2	9 1/2	4 3/4	2 5/8	51137-471
4 x 2 1/2	9 1/2	4 3/4	2 5/8	51137-472
4 x 3	9 1/2	4 3/4	2 5/8	51137-473



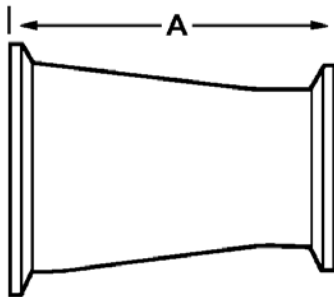
A9MP		Cross	
Size Tube O.D.	A	B	Part Number
1/2	4 1/2	2 1/4	51137-931
3/4	4 3/4	2 3/8	51137-932
1	5 1/4	2 5/8	51137-185
1 1/2	5 3/4	2 7/8	51137-186
2	6 3/4	3 3/8	51137-187
2 1/2	7 1/4	3 5/8	51137-188
3	7 3/4	3 7/8	51137-189
4	9 1/2	4 3/4	51137-190



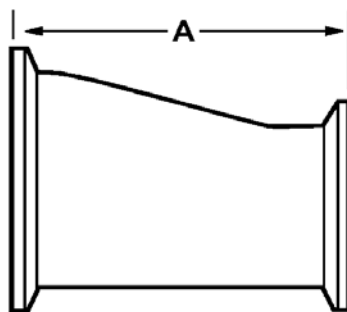
Clamp End Caps & Reducers



A16AMP			Solid End Cap
Size Tube O.D.	A	C	Part Number
1/2	63/64	3/16	50003-060
3/4	63/64	3/16	50003-060
1	1 63/64	1/4	50003-007
1 1/2	1 63/64	1/4	50003-007
2	2 33/64	1/4	50003-008
2 1/2	3 3/64	1/4	50003-009
3	3 37/64	1/4	50003-010
4	4 43/64	5/16	50003-011



A31-14MP		Concentric Reducer
Size Tube O.D.	A	Part Number
3/4 x 1/2	2	51137-446
1 x 1/2	2 1/2	51137-439
1 x 3/4	2	51137-458
1 1/2 x 1/2	3 1/2	51137-440
1 1/2 x 3/4	3	51137-441
1 1/2 x 1	3	51137-191
2 x 1/2	5 1/2	51137-447
2 x 3/4	5	51137-448
2 x 1	5	51137-192
2 x 1 1/2	3	51137-193
2 1/2 x 2	3	51137-196
3 x 1 1/2	7	51137-197
3 x 2	5	51137-198
3 x 2 1/2	3	51137-199
4 x 1 1/2	11 1/8	51137-799
4 x 2	9 1/8	51137-200
4 x 2 1/2	7 1/8	51137-201
4 x 3	5 1/8	51137-202

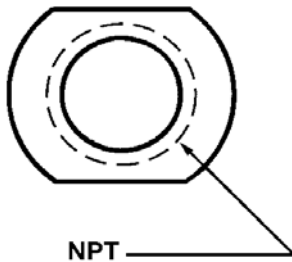
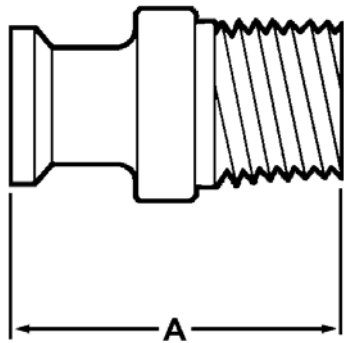


A32-14MP		Eccentric Reducer
Size Tube O.D.	A	Part Number
3/4 x 1/2	2	51137-449
1 x 1/2	3	51137-442*
1 x 3/4	2	51137-443
1 1/2 x 1/2	5	51137-444*
1 1/2 x 3/4	4	51137-445*
1 1/2 x 1	3	51137-203
2 x 1/2	7	51137-450*
2 x 3/4	6	51137-451*
2 x 1	5	51137-204
2 x 1 1/2	3	51137-205
2 1/2 x 2	3	51137-207
3 x 1 1/2	7	51137-208
3 x 2	5	51137-209
3 x 2 1/2	3	51137-210
4 x 1 1/2	11 1/8	51137-936
4 x 2	9 1/8	51137-211
4 x 2 1/2	7 1/8	51137-212
4 x 3	5 1/8	51137-213

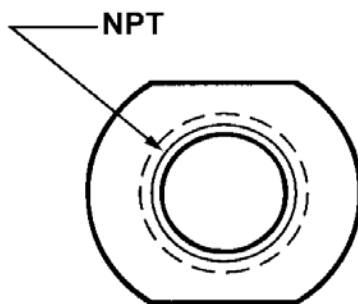
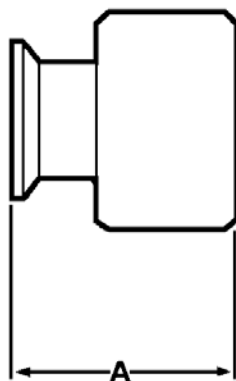
Note: 1/2" fittings take 3/4" clamps.



Pipe Adapters



A21MP*		Male Adapter (N.P.T. Pipe Thread)	
Size Tube O.D.	A	Part Number	
1/2 x 1/4	1 37/64	51102-175	
1/2 x 3/8	1 25/32	51102-214	
1/2 x 1/2	2	51102-169	
3/4 x 1/4	1 25/32	51102-216	
3/4 x 3/8	1 25/32	51102-217	
3/4 x 1/2	2	51102-170	
3/4 x 3/4	2	51102-153	
1 x 1/2	2	51102-149	
1 x 3/4	2 3/16	51102-111	
1 x 1	2 1/4	51102-112	
1 1/2 x 1/2	1 13/16	51102-171	
1 1/2 x 3/4	2 3/16	51102-115	
1 1/2 x 1	2 5/16	51102-116	
1 1/2 x 1 1/2	2 7/16	51102-117	
2 x 1/2	2 5/64	51102-218	
2 x 3/4	2 3/32	51102-219	
2 x 1	2	51102-150	
2 x 1 1/2	2 15/32	51102-119	
2 x 2	2 21/32	51102-120	
2 1/2 x 2 1/2	3 9/32	51102-124	
3 x 3	3 1/2	51102-125	
4 x 4	3 13/16	51102-126	



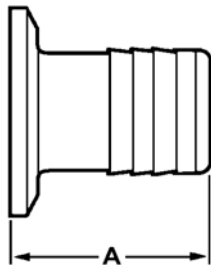
A22MP*		Female Adapter (N.P.T. Pipe Thread)	
Size Tube O.D.	A	Part Number	
1/2 x 1/4	1 1/2	51102-204	
1/2 x 3/8	1 1/2	51102-205	
1/2 x 1/2	1 1/2	51102-166	
3/4 x 1/4	1 1/2	51102-208	
3/4 x 3/8	1 9/32	51102-209	
3/4 x 1/2	1 1/2	51102-174	
3/4 x 3/4	1 5/8	51102-167	
1 x 1/2	1 1/2	51102-146	
1 x 3/4	1 5/8	51102-127	
1 x 3/8	2 9/32	51102-179	
1 x 1	1 5/8	51102-128	
1 1/2 x 1/2	1 1/2	51102-173	
1 1/2 x 3/4	1 5/8	51102-131	
1 1/2 x 1	1 5/8	51102-132	
1 1/2 x 1 1/2	2 1/4	51102-133	
2 x 1/2	1 5/8	51102-211	
2 x 3/4	1 5/8	51102-212	
2 x 1	2 1/8	51102-144	
2 x 1 1/2	1 11/16	51102-135	
2 x 2	2 11/32	51102-136	
2 1/2 x 2 1/2	2 3/32	51102-140	
3 x 3	2 3/16	51102-141	
4 x 4	2 5/8	51102-142	

Note: 1/2" fittings take 3/4" clamps.

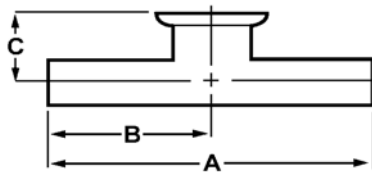
*Indicates Not to BPE Dimensions



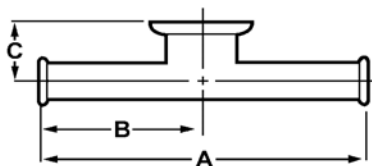
Hose Adapters & Instrument Tees



A14MPHR*		Hose Adapter
Tube O.D.	A	Part Number
1/2 x 1/4	1 11/16	51102-301
1/2 x 3/8	1 11/16	51102-302
1/2 x 1/2	1 11/16	51102-303
3/4 x 1/4	1 11/16	51102-301
3/4 x 3/8	1 11/16	51102-302
3/4 x 1/2	1 11/16	51102-303
3/4 x 3/4	1 11/16	51102-307
1	1 11/16	51102-087
1 1/2	1 11/16	51102-088
2	2 5/16	51102-089
2 1/2	2 11/32	51102-090
3	3 3/32	51102-091
4	3 13/32	51102-092
1 x 1/4	1 1/2	51102-309
1 x 3/8	1 11/16	51102-310
1 x 1/2	1 11/16	51102-311
1 x 3/4	1 11/16	51102-312
1 1/2 x 1/4	1 1/2	51102-347
1 1/2 x 3/8	1 11/16	51102-349
1 1/2 x 1/2	1 11/16	51102-350
1 1/2 x 3/4	1 11/16	51102-352
2 x 1/2	1 11/16	51102-319
2 x 3/4	1 11/16	51102-320
2 x 1	1 11/16	51102-321
2 x 1 1/2	1 11/16	51102-322



A7-54WWM*		Instrument Tee		
Tube O.D.	A	B	C	Part Number
1/2 x 1 1/2	5 3/4	2 7/8	1 1/8	51037-743
3/4 x 1 1/2	5 3/4	2 7/8	1 1/4	51037-744
3/4 x 2	6	3	1 3/8	51037-747
1 x 2	6	3	1 1/2	51037-748
1 1/2 x 2	6	3	1 3/4	51037-749
1 x 1 1/2	5 3/4	2 7/8	1 3/8	51037-745
1/2 x 1	4 3/4	2 3/8	1	51037-918
3/4 x 1	4 3/4	2 3/8	1 1/8	51037-919
1/2 x 2	6	3	1 1/4	51037-746
1/2 x 3/4	4 1/2	2 1/4	1	51037-920



A7-54MP*		Instrument Tee		
Tube O.D.	A	B	C	Part Number
1/2 x 1 1/2	6 3/4	3 3/8	1 1/8	51037-757
3/4 x 1 1/2	6 3/4	3 3/8	1 1/4	51037-758
1 x 1 1/2	6 3/4	3 3/8	1 3/8	51037-759
1/2 x 2	7	3 1/2	1 1/4	51037-760
3/4 x 2	7	3 1/2	1 3/8	51037-761
1 x 2	7	3 1/2	1 1/2	51037-762
1 1/2 x 2	7	3 1/2	1 3/4	51037-763
1/2 x 1	5 3/4	2 7/8	1	51037-764
3/4 x 1	5 3/4	2 7/8	1 1/8	51037-765
1/2 x 3/4	5 1/2	2 3/4	1	51037-766

Note: 1/2" fittings take 3/4" clamps.

*Indicates Not to BPE Dimensions

