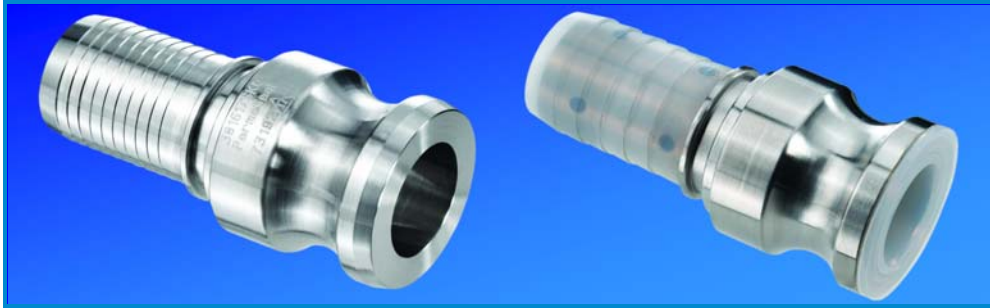


# Male Cam Lock Fitting

## Fitting Specifications



## Style 17/17T

### Description

Male Cam and Groove, type 'E'

### Specifications

Quick connect/disconnect cam and groove fittings are manufactured to specification MIL-C-27487. Performance to this specification assures complete interchangeability.

### Materials

- Type 316L Stainless Steel
- Chemflur® PFA encapsulated

Ultimate corrosion resistant design. Face sealing surface features a dove-tail-locking design. Vacuum resistant; matching inside diameters to all PFA encapsulated fitting designs.

### Temperature/Pressure rating

Pressure ratings are for fittings only. When determining hose max working pressure, temperature and gasket material must be considered.

### Buna-N Gasket

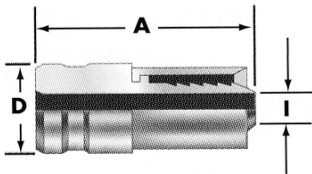
1/2" - 2" 250 PSI @ 212°F  
2 1/2" - 4" 150 PSI @ 212°F

### PFA Encapsulated Gasket

1/2" - 2" 250 PSI @ 400°F  
2 1/2" - 4" 150 PSI @ 400°F

Male Cam and Groove (316 SS) Specifications Style 17

Hose Size ID (in.)	Part Number (Stainless Steel)	Overall Length 'A' (in.)	Outside Dimension 'D' (in.)	Fitting ID 'I' (in.)
1/2	380817SKO	2.25	1.18	0.39
3/4	381217SKO	2.53	1.25	0.63
1	381617SKO	2.86	1.47	0.85
1 1/2	382417SKO	4.00	2.09	1.37
2	383217SKO	4.82	2.49	1.75
2 1/2	384017SKO	*	*	2.20
3	384817SKO	5.53	3.60	2.76



Male Cam and Groove (PFA Encapsulated) Specifications Style 17T

Hose Size ID (in.)	Part Number (PFA Encapsulated)	Overall Length 'A' (in.)	Outside Dimension 'D' (in.)	Fitting ID 'I' (in.)
3/4	381217TKO	*	1.25	0.50
1	381617TKO	3.02	1.44	0.66
1 1/2	382417TKO	3.95	2.09	1.15
2	383217TKO	5.02	2.49	1.58
2 1/2	384017TKO	*	*	2.10
3	384817TKO	5.71	3.60	2.50

\*Consult Sani-Tech West

Chemflur® is a registered trademark of Saint-Gobain Performance Plastics

# sani-tech west

321 Irving Drive  
Oxnard, CA 93030  
(800) 726-4835  
www.sani-techwest.com