

Hold In Place

Product Description

The Metenova HIP, **Hold In Place** connection offers a simplified way of connecting your flanged connections in just seconds. The unique hinged design makes it simple and secure, with a one bolt lock.

The excellent aseptic design, materials complying with FDA regulations combined with a unique easy to use patent pending design. For use in the pharmaceutical and biotechnology industries.



Technical specifications

General Information

Flange - wetted part	
Heat Certificate:	3.1 acc. to EN 10 204
Welding Flange:	Stainless Steel AISI 316L ASME SA-479
Internal Surface Roughness:	$Ra \leq 0,8 \mu m$ (32 μin)
External Surface Roughness:	$Ra \leq 1,6 \mu m$ (63 μin)
Design Temp:	-80°C - 200°C (-112°F - 392°F)
Design Pressure	-1 - 7 barg (-14.7 - 103 psig)

Other

U-Lock	Stainless Steel AISI 316L ASME SA-479 / EN 10272
Hinge	Stainless Steel AISI 316L ASME SA-479 / EN 10272
Acorn Nut	A4 Stainless Steel EN 1,4401/ EN 1,4301
Pin Bolt	A4 Stainless Steel EN 1,4401/ EN 1,4301
Bolts	A4 Stainless Steel EN 1,4401/ EN 1,4301

Packaging & Labeling:

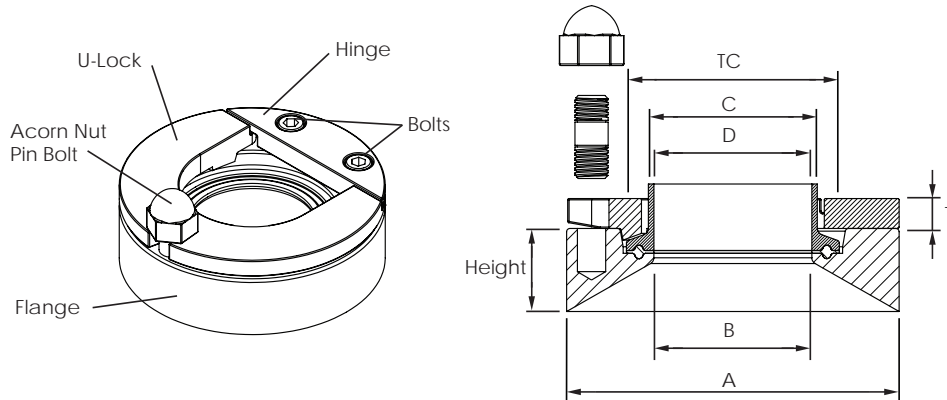
For traceability purposes items are marked with item and id number. They are individually packed and labeled boxes.

Quality Control: Metenova Quality Assurance system ensure the quality and traceability at all stages of the process.

Options: Non-standard Metenova HIP Options and other material are available, please contact Metenova for further information.

Hold In Place

Dimensions



* To be used with standard flanged type gaskets according to ISO 2852

Item Number	Height mm [in]	TC mm [in]	A mm [in]	B mm [in]	C (max) mm [in]	D (max) mm [in]	T mm [in]	Acorn mm
HIP25601-00519	25 [1"]	25 [1/2"]	55,0 [2.165]	15,8 [0.620]	20,0 [0.787]	15,8 [0.620]	7,5 [0.295]	13
HIP50601-00525	25 [1"]	50,5 [1 1/2"]	85,0 [3.350]	34,8 [1.370]	43,8 [1.724]	34,8 [1.370]	9,0 [0.354]	17
HIP50601-00526	51 [1 1/2"]	50,5 [1 1/2"]	85,0 [3.350]	34,8 [1.370]	43,8 [1.724]	34,8 [1.370]	9,0 [0.354]	17
HIP64601-00531	25 [1"]	64 [2"]	100,0 [3.940]	47,50 [1.870]	55,0 [2.165]	47,50 [1.870]	9,0 [0.354]	17
HIP64601-00532	51 [1 1/2"]	64 [2"]	100,0 [3.940]	47,50 [1.870]	55,0 [2.165]	47,50 [1.870]	9,0 [0.354]	17
HIP77601-00537	25 [1"]	77,5 [2 1/2"]	115,0 [4.530]	60,20 [2.370]	65,5 [2.578]	60,20 [2.370]	9,0 [0.354]	17
HIP77601-00538	51 [1 1/2"]	77,5 [2 1/2"]	115,0 [4.530]	60,20 [2.370]	65,5 [2.578]	60,20 [2.370]	9,0 [0.354]	17
HIP91601-00543	25 [1"]	91 [3"]	130,0 [5.120]	72,90 [2.870]	78,0 [3.070]	72,90 [2.870]	9,0 [0.354]	17
HIP91601-00544	51 [1 1/2"]	91 [3"]	130,0 [5.120]	72,90 [2.870]	78,0 [3.070]	72,90 [2.870]	9,0 [0.354]	17
HIP11601-00549	25 [1"]	119 [4"]	170,0 [6.700]	97,40 [3.834]	105,0 [4.133]	97,40 [3.834]	9,0 [0.354]	17
HIP11601-00550	51 [1 1/2"]	119 [4"]	170,0 [6.700]	97,40 [3.834]	105,0 [4.133]	97,40 [3.834]	9,0 [0.354]	17

Notice
 Information in this publication is subject to change without notice. The latest version will be available for download at www.metenova.com. The information in this document is believed to be complete and accurate at the time of publication. Metenova AB assumes no responsibility for any errors that may appear in this document.