

Sanitary Clamp Fittings

Materials

- Only AISI T316L Stainless Steel is used for fitting manufacturing.

Surface Finishes

- Multiple combinations of finishes are available, from 1ORa maximum to 3ORa minimum.

Marking

- All fittings are pin-printed for permanent identification per ASME-BPE.
- The mill heat number is stamped on each fitting for each component.

Traceability

- A printed copy of MTR's is provided for all components used in fitting manufacturing and is available upon request.

Packaging

- Each fitting is cleaned in Deionized Water and dried with filtered air.
- All ends (weld & clamp) are capped to prevent damage.
- Each fitting is individually placed in a plastic bag and heat sealed.
- Every fitting has a label attached to the outside of the bag which lists the part number, part description and size, material type, heat number(s) and date of manufacture.

[Elbows](#)

[Tees](#)

[Crosses](#)

[Ferrules](#)

[Adapters](#)

[End Caps](#)

[Clamps](#)

[Reducers](#)

[Page 2 & 3](#)

[Page 3](#)

[Page 3](#)

[Page 4](#)

[Page 5 & 6](#)

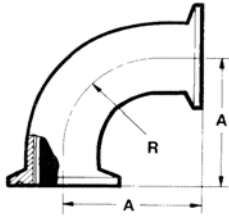
[Page 7](#)

[Page 7](#)

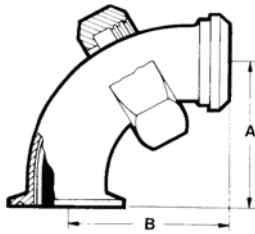
[Page 8 & 9](#)



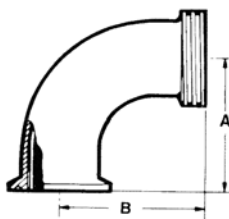
Clamp Elbows



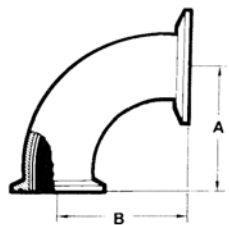
A2CMP		90° Elbow	
Size Tube O.D.	A	R	Part Number
1	2	1 1/2	51137-167
1 1/2	2 3/4	2 1/4	51137-168
2	3 1/2	3	51137-169
2 1/2	4 1/4	3 3/4	51137-170
3	5	4 1/2	51137-171
4	6 5/8	6	51137-172



A2FMP-14		90° Elbow	
Size Tube O.D.	A	B	Part Number
1 1/2	2 3/4	2 31/32	51137-353
2	3 1/2	3 23/32	51137-354
2 1/2	4 1/4	4 19/32	51137-355
3	5	5 13/32	51137-356
4	6 5/8	7 7/32	51137-357



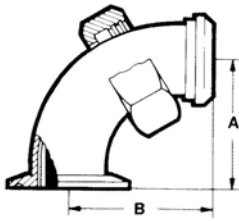
A2FMP-15		90° Elbow	
Size Tube O.D.	A	B	Part Number
1 1/2	2 3/4	2 31/32	51137-359
2	3 1/2	3 23/32	51137-360
2 1/2	4 1/4	4 19/32	51137-361
3	5	5 13/32	51137-362
4	6 5/8	7 7/32	51137-363



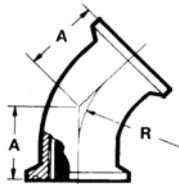
A2CMP-31MP		90° Reducing Elbow (Non-Tapered)	
Size Tube O.D.	A	B	Part Number
2 x 1	2	2	51137-364
2 x 1 1/2	2 3/4	2 3/4	51137-365
2 1/2 x 1 1/2	2 3/4	2 3/4	51137-366
2 1/2 x 2	3 1/2	3 1/2	51137-367
3 x 1 1/2	2 3/4	2 3/4	51137-368
3 x 2	3 1/2	3 1/2	51137-369
3 x 2 1/2	4 1/4	4 1/4	51137-370
4 x 2 1/2	4 1/4	4 3/8	51137-371
4 x 3	5	5 1/8	51137-372

Note: One inch fittings take 1/2" clamps.

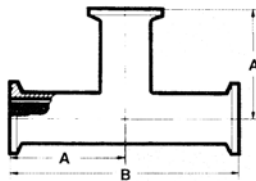
Clamp Elbows, Tees & Crosses



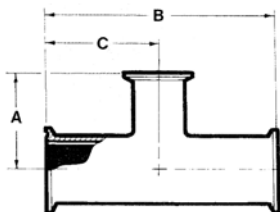
A2E-31MP		90° Reducing Elbow (Non-Tapered)	
Size Tube O.D.	A	B	Part Number
2 x 1	2	2 3/16	51137-373
2 x 1 1/2	2 3/4	2 31/32	51137-374
2 1/2 x 1 1/2	2 3/4	2 31/32	51137-375
2 1/2 x 2	3 1/2	3 23/32	51137-376
3 x 1 1/2	2 3/4	2 31/32	51137-377
3 x 2	3 1/2	3 23/32	51137-378
3 x 2 1/2	4 1/4	4 19/32	51137-379
4 x 2 1/2	4 1/4	4 19/32	51137-380
4 x 3	5	5 13/32	51137-381



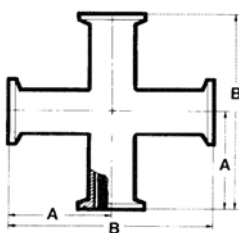
A2KMP		45° Elbow	
Size Tube O.D.	A	R	Part Number
1	1 1/8	1 1/2	51137-173
1 1/2	1 7/16	2 1/4	51137-174
2	1 3/4	3	51137-175
2 1/2	2 1/16	3 3/4	51137-176
3	2 3/8	4 1/2	51137-177
4	3 1/8	6	51137-178



A7MP		Tee	
Size Tube O.D.	A	B	Part Number
1	2 5/8	5 1/4	51137-179
1 1/2	2 7/8	5 3/4	51137-180
2	3 3/8	6 3/4	51137-181
2 1/2	3 5/8	7 1/4	51137-182
3	3 7/8	7 3/4	51137-183
4	4 3/4	9 1/2	51137-184



A7RMP		Reducing Tee		
Size Tube O.D.	A	B	C	Part Number
2 x 1	3 1/8	6 3/4	3 3/8	51137-391
2 x 1 1/2	3 1/8	6 3/4	3 3/8	51137-392
2 1/2 x 2	3 3/8	7 1/4	3 5/8	51137-393
3 x 2	3 7/8	7 3/4	3 7/8	51137-394
3 x 2 1/2	3 7/8	7 3/4	3 7/8	51137-395

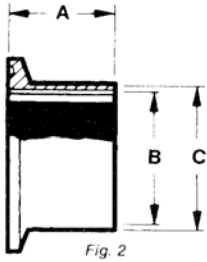


A9MP		Cross	
Size Tube O.D.	A	B	Part Number
1	2 5/8	5 1/4	51137-185
1 1/2	2 7/8	5 3/4	51137-186
2	3 3/8	6 3/4	51137-187
2 1/2	3 5/8	7 1/4	51137-188
3	3 7/8	7 3/4	51137-189
4	4 3/4	9 1/2	51137-190

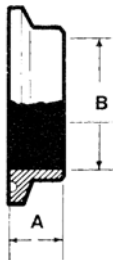
Note: One inch fittings take 1/2" clamps.



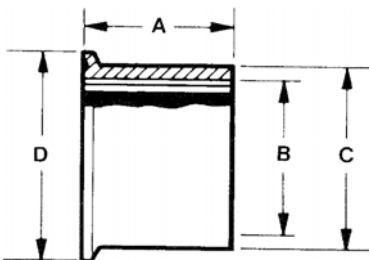
Clamp Ferrules



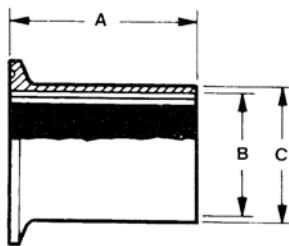
A14AM7				Butt Weld Ferrule
Size Tube O.D.	A	B	C	Part Number
1/2	1 1/8	.370	.50	51029-091
3/4	1 1/8	.620	.75	51029-092
1	1 1/8	.870	1.000	51029-001
1 1/2	1 1/8	1.370	1.500	51029-002
2	1 1/8	1.870	2.000	51029-003
2 1/2	1 1/8	2.370	2.500	51029-004
3	1 1/8	2.870	3.000	51029-005
4	1 1/8	3.834	4.000	51029-006



A14WMP			Short Weld Ferrule
Size Tube O.D.	A	B	Part Number
1/2	1/2	.370	50029-005
3/4	1/2	.620	50029-006
1	1/2	.870	50029-007
1 1/2	1/2	1.370	50029-008
2	1/2	1.870	50029-009
2 1/2	1/2	2.370	50029-010
3	1/2	2.870	50029-011
4	1/2	3.834	50029-012



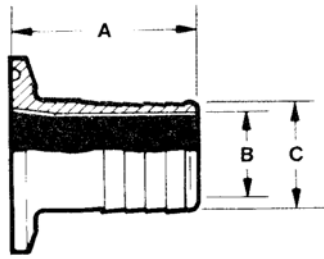
14MPW					Tank Weld Ferrule
Size Tube O.D.	A	B	C	D	Part Number
1	1 5/8	.870	1.160	1.984	51029-085
1 1/2	1 5/8	1.370	1.676	1.984	51029-086
2	1 3/4	1.870	2.192	2.516	51029-087
2 1/2	1 3/4	2.370	2.708	3.047	51029-088
3	1 13/16	2.870	3.224	3.579	51029-089
4	2 1/8	3.834	4.256	4.682	51029-090



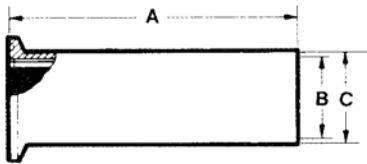
A14WLMP				Tank Weld Spud (Light)
Size Tube O.D.	A	B	C	Part Number
1	3	.870	1.000	51129-001
1 1/2	3	1.370	1.500	51129-002
2	3	1.870	2.000	51129-003
2 1/2	3	2.370	2.500	51129-004
3	4	2.870	3.000	51129-005
4	4	3.834	4.000	51129-006

Note: One inch fittings take 1/2" clamps.

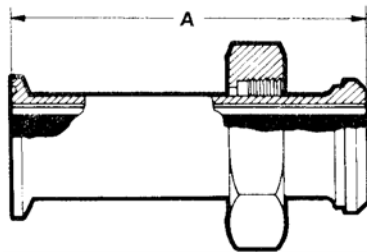
Clamp Adapters



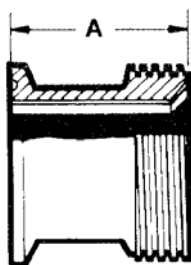
A14MPHR		Rubber Hose Adapter		
Size Tube O.D.	A	B	C	Part Number
1	1 11/16	.870	1.000	51102-087
1 1/2	1 11/16	1.370	1.500	51102-088
2	2 5/16	1.870	2.000	51102-089
2 1/2	2 11/32	2.370	2.500	51102-090
3	3 3/32	2.870	3.000	51102-091
4	3 13/32	3.834	4.000	51102-092



A14MPHT		Tygon Hose Adapter		
Size Tube O.D.	A	B	C	Part Number
1	4 1/2	.870	1.000	51102-093
1 1/2	4 1/2	1.370	1.500	51102-094
1 1/2 x 3/4	4 1/2	.620	.750	51102-165
1 1/2 x 1	4 1/2	.870	1.000	51102-093
2	4 1/2	1.870	2.000	51102-095
2 x 1	4 1/2	.870	1.000	
2 1/2	4 1/2	2.370	2.500	51102-096
2 1/2 x 1 1/2	4 1/2	1.370	1.500	
3	4 1/2	2.870	3.000	51102-097
4	4 5/8	3.834	4.000	51102-098



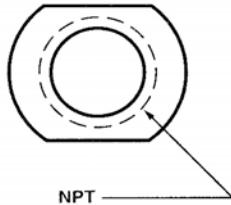
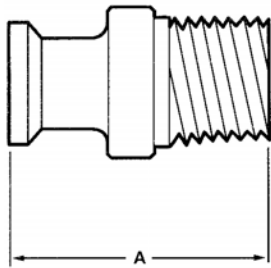
A17MP-14		Adapter	
Size Tube O.D.	A	Part Number	
1	3	51102-099	
1 1/2	3	51102-100	
2	3	51102-101	
2 1/2	3 1/2	51102-102	
3	3 1/2	51102-103	
4	4	51102-104	



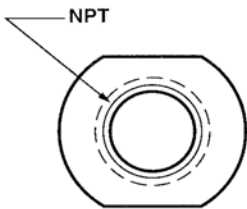
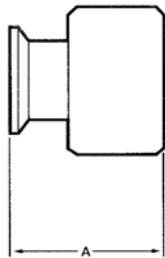
A17MP-15		Adapter	
Size Tube O.D.	A	Part Number	
1	1 11/16	51102-105	
1 1/2	1 23/32	51102-106	
2	1 23/32	51102-107	
2 1/2	1 27/32	51102-108	
3	1 29/32	51102-109	
4	2 11/32	51102-110	

Note: One inch fittings take 1/2" clamps.

Clamp Adapters



NPT



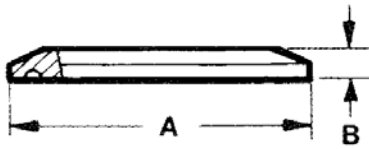
NPT

A21MP		Male Adapter (N.P.T. Pipe Thread)
Size Tube O.D.	A	Part Number
1 x 3/4	2 3/16	51102-111
1 x 1	2 1/4	51102-112
1 1/2 x 1/2	1 13/16	51102-171
1 1/2 x 3/4	2 3/16	51102-115
1 1/2 x 1	2 5/16	51102-116
1 1/2 x 1 1/2	2 7/16	51102-117
2 x 1/2	2 5/64	51102-218
2 x 3/4	2 3/32	51102-219
2 x 1	2	51102-150
2 x 1 1/2	2 15/32	51102-119
2 x 2	2 21/32	51102-120
2 1/2 x 2 1/2	3 9/32	51102-124
3 x 3	3 1/2	51102-125
4 x 4	3 13/16	51102-126

A22MP		Female Adapter (N.P.T. Pipe Thread)
Size Tube O.D.	A	Part Number
1 x 3/4	1 5/8	51102-127
1 x 3/8	2 9/32	51102-179
1 x 1	1 5/8	51102-128
1 1/2 x 1/2	1 1/2	51102-173
1 1/2 x 3/4	1 5/8	51102-131
1 1/2 x 1	1 5/8	51102-132
1 1/2 x 1 1/2	2 1/4	51102-133
2 x 1/2	1 5/8	51102-211
2 x 3/4	1 5/8	51102-212
2 x 1	2 1/8	51102-144
2 x 1 1/2	1 11/16	51102-135
2 x 2	2 11/32	51102-136
2 1/2 x 2 1/2	2 3/32	51102-140
3 x 3	2 3/16	51102-141
4 x 4	2 5/8	51102-142

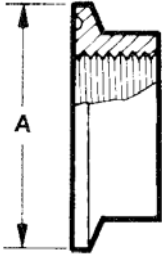
Note: One inch fittings take 1/2" clamps.

Caps & Clamps



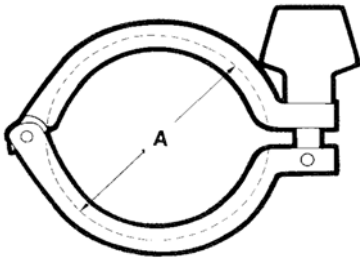
A16AMP			Solid End Cap
Size Tube O.D.	A	B	Part Number
1 & 1/2	1 63/64	1/4	50003-007
2	2 33/64	1/4	50003-008
2 1/2	3 3/64	1/4	50003-009
3	3 37/64	1/4	50003-010
4	4 43/64	5/16	50003-011

1 1/2" Caps used on both 1" and 1 1/2" lines

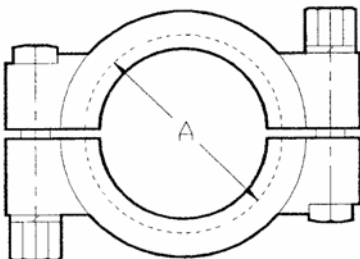


A32BMP		Thermometer Caps
Size Tube O.D.	A	Part Number
1	1.984	51003-013
1 1/2	1.984	51003-014
2	2.516	51003-015
2 1/2	3.047	50003-016
3	3.579	50003-017
4	4.682	50003-018

1" Tapped 1/2" N.P.T. All others 3/4" N.P.T.



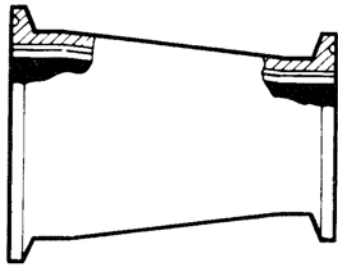
A13MHHM		Heavy Duty Clamp		
Size Tube O.D.	A	Pressure Rating (psi)		Part Number
		Psi 70°F	Psi 250°F	
1/2 x 3/4	1.10	1500	1200	21119-060
1 x 1 1/2	2.122	500	250	21119-002
2	2.654	450	250	21119-003
2 1/2	3.185	400	200	21119-004
3	3.717	350	150	21119-005
4	4.820	200	125	21119-006



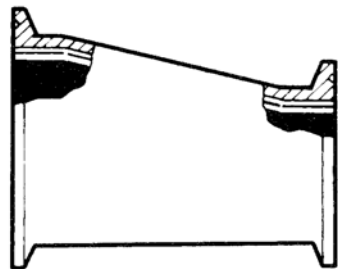
A13MHP		High Pressure Clamp		
Size Tube O.D.	A	Pressure Rating (psi)		Part Number
		Psi 70°F	Psi 250°F	
1 1/2	2.046	1500	1200	21119-065
2	2.578	1000	800	21119-066
2 1/2	3.110	1000	800	21119-069
3	3.640	1000	800	21119-067
4	4.744	1000	800	21119-068

Note: One inch fittings take 1/2" clamps.

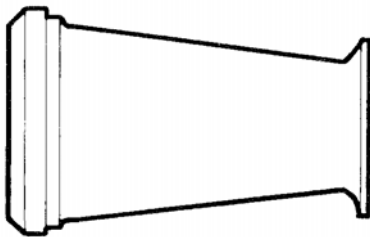
Reducers



A31-14MP		Concentric Reducer
Size	Overall Length	Part Number
1 1/2 x 1	3	51137-191
2 x 1	5	51137-192
2 x 1 1/2	3	51137-193
2 1/2 x 1	7	51137-194
2 1/2 x 1 1/2	5	51137-195
2 1/2 x 2	3	51137-196
3 x 1 1/2	7	51137-197
3 x 2	5	51137-198
3 x 2 1/2	3	51137-199
4 x 2	9 1/8	51137-200
4 x 2 1/2	7 1/8	51137-201
4 x 3	5 1/8	51137-202



A32-14MP		Eccentric Reducer
Size	Overall Length	Part Number
1 1/2 x 1	3	51137-203
2 x 1	5	51137-204
2 x 1 1/2	3	51137-205
2 1/2 x 1	7	51137-482
2 1/2 x 1 1/2	5	51137-206
2 1/2 x 2	3	51137-207
3 x 1 1/2	7	51137-208
3 x 2	5	51137-209
3 x 2 1/2	3	51137-210
4 x 2	9 1/8	51137-211
4 x 2 1/2	7 1/8	51137-212
4 x 3	5 1/8	51137-213



A31PMP		Adapter - Reducer (Concentric)
Size	Overall Length	Part Number
*1 1/2 x 1	3 7/32	51137-396
2 x 1	3 5/16	51137-397
2 x 1 1/2	3 5/16	51137-398
2 1/2 x 1 1/2	3 3/8	51137-399
2 1/2 x 2	4 13/32	51137-400
3 x 2	4 13/32	51137-401
3 x 2 1/2	4 17/32	51137-402
4 x 2 1/2	4 17/32	51137-403
4 x 3	4 17/32	51137-404

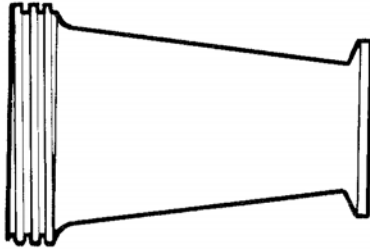
*Hex nut furnished



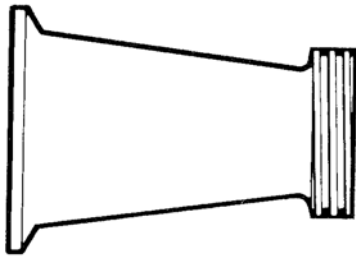
A31MPP		Adapter - Reducer (Concentric)
Size	Overall Length	Part Number
1 1/2 x 1	4 1/8	51137-414
2 x 1	4 1/8	51137-415
2 x 1 1/2	4 7/32	51137-416
2 1/2 x 1 1/2	4 7/32	51137-417
2 1/2 x 2	4 13/32	51137-418
3 x 2	5 13/32	51137-419
3 x 2 1/2	5 21/32	51137-420
4 x 2 1/2	5 25/32	51137-421
4 x 3	5 15/16	51137-422

Note: One inch fittings take 1/2" clamps.

Reducers



A31TMP		Adapter - Reducer (Concentric)	
Size	Overall Length	Part Number	
1 1/2 x 1	3 7/32	51137-405	
2 x 1	3 5/16	51137-406	
2 x 1 1/2	3 5/16	51137-407	
2 1/2 x 1 1/2	3 3/8	51137-408	
2 1/2 x 2	3 3/8	51137-409	
3 x 2	4 13/32	51137-410	
3 x 2 1/2	4 13/32	51137-411	
4 x 2 1/2	4 17/32	51137-412	
4 x 3	4 17/32	51137-413	



A31MPT		Adapter - Reducer (Concentric)	
Size	Overall Length	Part Number	
1 1/2 x 1	3 3/16	51137-423	
2 x 1	3 3/16	51137-424	
2 x 1 1/2	3 7/32	51137-425	
2 1/2 x 1 1/2	3 7/32	51137-426	
2 1/2 x 2	3 5/16	51137-427	
3 x 2	4 5/16	51137-428	
3 x 2 1/2	4 3/8	51137-429	
4 x 2	4 7/16	51137-430	
4 x 2 1/2	4 1/2	51137-431	
4 x 3	4 13/32	51137-432	

Note: One inch fittings take 1/2" clamps.